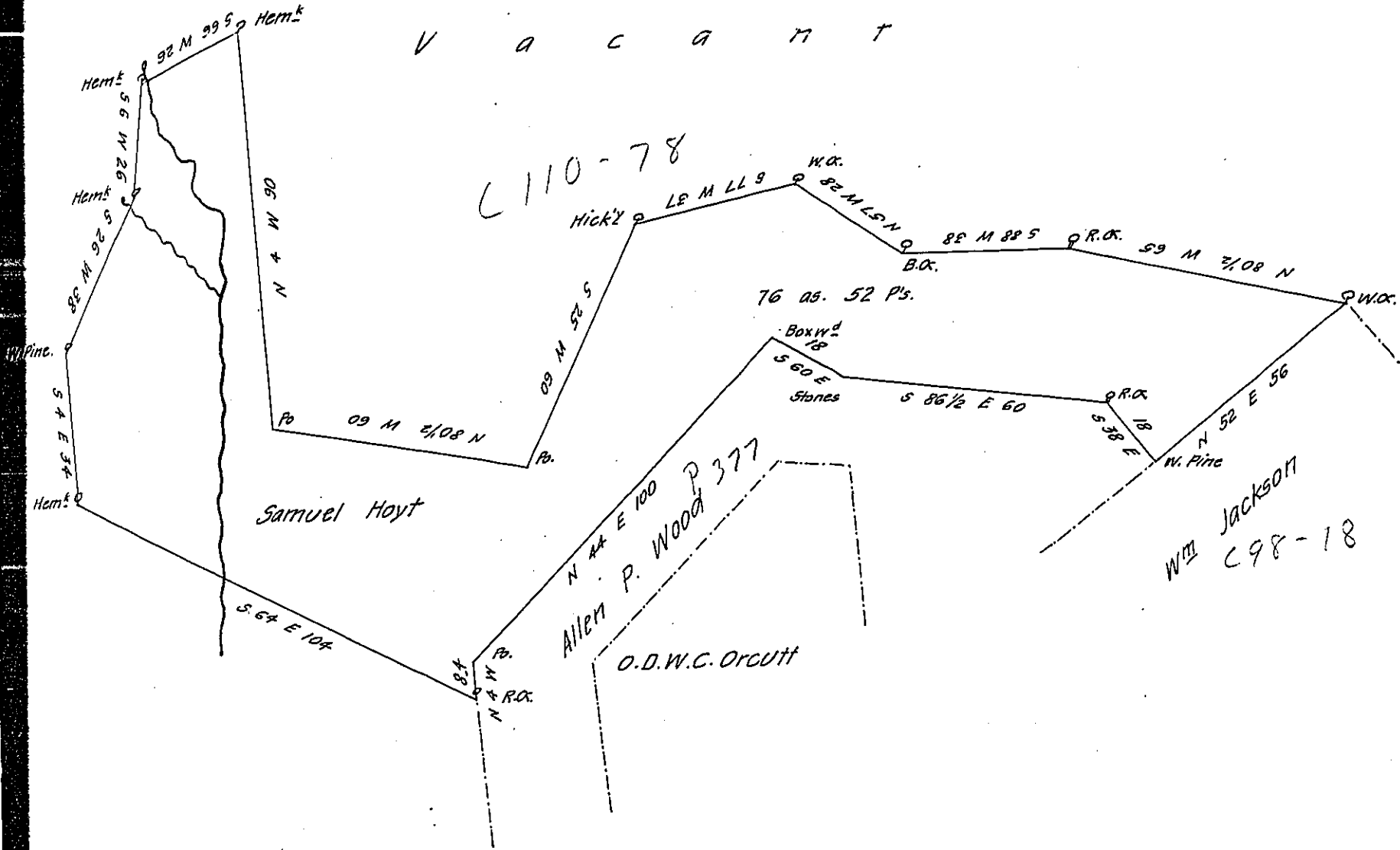


V A C A T



Draft of a tract of unimproved land situate in the township of Monroe in the County of Wyoming (formerly Luzerne) containing 76 acres 52 perches and allowance of 6 per Cent.

Surveyed the above described tract of land the 13 day of April 1852 for Samuel Hoyt by virtue of his warrant dated the 8th day of December 1837 supposed to have been surveyed in the month of December 1837 by the Deputy Surveyor of Luzerne County

The above are true meridian courses - Variation 4° West

A. Hine D.S.

To J. P. Brawley Esqr.
Surveyor General.

IN TESTIMONY that the above is a copy of the original remaining on file in the Department of Internal Affairs of Pennsylvania, made conformably to an Act of Assembly approved the 16th day of February, 1833, I have hereunto set my Hand and caused the Seal of said Department to be affixed at Harrisburg, this eighteenth day of March 1908

Henry Howell
Secretary of Internal Affairs.